



# MELGES 24 WORLD CHAMPIONSHIP 2017

28.7 – 4.8. 2017  
HELSINKI, FINLAND

## NOTICE OF RACE

The Organizing Authority (OA) of the Melges 24 World Championship 2017 is HSK, Helsingfors Segelklubb in co-operation with International Melges 24 Class Association (IM24CA) and Finnish Melges 24 Fleet.

### 1. **RULES**

- 1.1. The regatta will be governed by the rules as defined in *The Racing Rules of Sailing* (RRS).
- 1.2. The prescriptions of the national authority will not apply.
- 1.3. The Equipment Rules of Sailing will apply.
- 1.4. The following rules will be changed in accordance with rule 86.1(b):
  - 1.4.1. All competitors shall wear personal flotation devices while racing, except for brief periods while changing or adjusting clothing. Wet suits and dry suits are not personal flotation devices. This changes RRS 40.
  - 1.4.2. Part 5 Section B of *The Racing Rules of Sailing* as well as rule 44.1 will be changed to permit protest arbitration.
  - 1.4.3. The Race Committee (RC) will use VHF radio to communicate to the fleet. Failure to make broadcasts or failure to hear the broadcast shall not constitute grounds for granting redress. This changes rule 62.1. The sailing instructions will provide more detail on the procedure.
  - 1.4.4. Appendix P will apply, and will be changed as described in NOR 12.5.
  - 1.4.5. The sailing instructions may also change other racing rules.
- 1.5. If there is a conflict between languages the English text will take precedence.
- 1.6. Class rule H3 will apply.

## **2. ADVERTISING**

- 2.1. Advertising will conform to the current World Sailing Regulation 20 and the Class Rules.
- 2.2. Boats may be required to display identification bow numbers and sponsors advertising for the duration of the event in accordance with World Sailing Regulation 20. These items will be supplied free of charge by the OA at registration.

## **3. ELIGIBILITY AND ENTRY**

- 3.1. The Championship is open to all boats of the Melges 24 class that meet with the obligations of the Class Rules and their National Authority, in the case that a National Authority exists.
- 3.2. Competitors shall comply with the World Sailing eligibility code (Regulation 19) which requires that all competitors (helmspersons and all other crew) shall be members of their Member National Authority or one of its affiliated organizations. The Yacht Club or organization name and membership details shall be stated when entering. Proof of membership shall be presented at registration.
- 3.3. Eligible boats may enter by completing online registration sending it together with the required fee by Friday 7<sup>th</sup> July 2017
- 3.4. No entries/payments will be accepted after 14<sup>th</sup> July 2017, unless approved by the OA. Entries after 14<sup>th</sup> July 2017 will sail in open division.
- 3.5. The Organising Authority will acknowledge complete entries upon receipt via email and post on the official event web site at [www.melges24.fi](http://www.melges24.fi)  
Note – completed entry includes payment on entry fee.
- 3.6. Only boats that have completed all registration requirements will be regarded as entries.
- 3.7. Entry fee refunds may be granted at the discretion of the OA. An administrative fee of 200€ will be applied to all cancellations.

## **4. CLASSIFICATION**

- 4.1. The World Sailing Sailor Classification Code will apply to teams in the Corinthian Trophy (see RRS79). Please refer to World Sailing Web site: [www.sailing.org](http://www.sailing.org)
- 4.2. Indicate classification and the unique World Sailing sailor ID for each sailor on the entry form if entering for the Corinthian Trophy.
- 4.3. The closing date for the registration of Corinthian entries shall be Friday 7<sup>th</sup> July 2017.
- 4.4. Sailors shall be registered with World Sailing prior to Friday 7<sup>th</sup> July 2017 and be able to declare their World Sailing sailor ID and group number on the entry form.
- 4.5. Entries accepted after Friday 7<sup>th</sup> July 2017 shall not be eligible for the Corinthian Trophy.
- 4.6. Classification will be checked at registration. A final list will be published at the close of registration.
- 4.7. The Classification Protest Time Limit is the end of the protest time limit on the first day of racing (31<sup>st</sup> July 2017) for the championship.
- 4.8. Full details for the Corinthian Trophy can be found in IM24CA Championship rules.
- 4.9. Should a boat whose Corinthian entry has been checked and accepted need to change a crew member between the closing date of entries and the start of the regatta, the name of the new crew member with their valid World Sailing sailor ID and group number shall be submitted to the OA for approval by the IM24CA Championship Coordinator. A representative of the World Sailing Sailor Classification Commission may be present during registration and may carry out spot checks. Registration of a boat is not complete until the spot checks are completed.

## 5. FEES

- 5.1. Entry Fee includes launching at commencement and recovery at conclusion of the Regatta at designated times, berthing for the event, trailer storage, tickets to the events (Opening Ceremony, Closing Ceremony and Dinner) for all competing crew.
- 5.2. Payment until the 2<sup>nd</sup> of June 2017 shall be 750 €  
Payment from the 3<sup>rd</sup> of June to 7<sup>th</sup> of July 2017 shall be 975 €
- 5.3. Payment from the 8<sup>th</sup> of July to the 14<sup>th</sup> of July 2017 shall be 1 125 €
- 5.4. Payment options:
  - a) **Bank transfer,**  
Helsingfors Segelklubb ry, Vattuniemen puistotie 1, 00210 Helsinki, Finland  
IBAN: FI48 8000 1000 0835 77  
BIC: DABAFIHH  
NOTE! In the text field of the payment please type in competing boat's sail number with national letter i.e. FIN000
  - b) **Credit card or cash** payment during the final registration for late entries.
- 5.5. Entries will not be valid until payment is received and confirmed by the OA.

## 6. QUALIFYING SERIES AND FINAL SERIES

- 6.1. If there are more than 100 boats registered then the race committee may decide to divide them into two fleets for a qualifying and final series.
- 6.2. If a Qualifying Series and Final Series are held, the following will apply:
  - 6.2.1. Maximum of 3 races a day may be sailed with a maximum of 12 races for the regatta.
  - 6.2.2. The regatta will consist of a qualifying series of a maximum of 6 races followed by a final series of a maximum of 6 races.
  - 6.2.3. For the qualifying series, the Race Committee will divide the competitors into four groups of as nearly equal size as possible, which will sail in alternating combinations.
  - 6.2.4. Based on the results of the qualifying series, the fleet will be divided into a Gold Fleet and a Silver Fleet for the finals.
  - 6.2.5. Competitors will be informed in which group they sail their qualifying series by the close of Registration.

## 7. SCHEDULE

7.1.

Day	Date	Event	Time
Friday	28th July	Registration & Measurement	10.00 – 18.00
Saturday	29 <sup>th</sup> July	Registration & Measurement	09.00 – 20.00
Sunday	30 <sup>th</sup> July	Registration & Measurement Practice Race Opening ceremony	09.00 – 12.00 14.00 19.00
Monday	31 <sup>st</sup> July	Racing	Scheduled
Tuesday	1 <sup>st</sup> August	Racing	Scheduled
Wednesday	2 <sup>nd</sup> August	Racing	Scheduled
Thursday	3 <sup>rd</sup> August	Racing	Scheduled
Friday	4 <sup>th</sup> August	Racing	Scheduled

- 7.2. Twelve (12) races are scheduled for this championship.
- 7.3. The RC may race as many as three (3) races each day.
- 7.4. The O.A. and/or the R.C. reserve the right to modify the programme due to weather conditions or other causes.

## **8. MEASUREMENTS**

- 8.1. Each boat shall produce a valid measurement certificate before the closing of registration on 30<sup>th</sup> July 2017 at 12.00. Documents may be submitted before registration to IMCA Administrator Piret Salmistu via email at [piret@melges24.com](mailto:piret@melges24.com)
- 8.2. The technical committee may weigh, measure or inspect any boat and or her equipment and sails before, during or after the races.
- 8.3. Registration of sails and limitation stamping will take place during periods stated in 7.1 above. **THERE WILL BE NO FACILITIES FOR INITIAL MEASUREMENT.** Sails shall be measured and stamped by an approved measurer before arrival at the Regatta.
- 8.4. In accordance with rule G3, a boat chartered or loaned for this event may carry national letters or a sail number in contravention of the Class Rules.
- 8.5. During the regatta checks on conformity with class rules, including measurement requirements may be performed at any time
- 8.6. A boat will provide a minimum of 2 people to facilitate measurement.

## **9. SAILING INSTRUCTIONS**

- 9.1. The Sailing Instructions will be available at the registration.
- 9.2. The Sailing Instructions will also be posted on the event website [www.melges24.fi](http://www.melges24.fi) when available.

## **10. VENUE**

- 10.1. Appendix 1 shows the location of the regatta harbour and host organisation.
- 10.2. Appendix 2 shows the location of the racing areas.

## **11. THE COURSES**

- 11.1 The course to be sailed will be windward-leeward.
- 11.2 Spreader/offset marks and leeward gates shall be used.

## **12. PENALTY SYSTEM**

- 12.1 The first two sentences of rule 44.1 are changed to read: "A boat may take a One-Turn Penalty when she may have broken a rule of Part 2 or rule 31 or Class rule C11 while racing."
- 12.2 Unless the course is shortened to finish at the windward mark, penalties while in the zone of the windward mark or on the offset leg may be delayed and taken as soon as possible on the downwind leg. This changes rule 44.2.
- 12.3 If a member of the Jury witnesses a breach of RRS Part 2, RRS 31 and/or Class Rule C.11, they may indicate their observation by making a long sound (whistle) and a red flag. The boat shall then exonerate itself by complying with sailing instruction 12.1. If no penalty is taken the Jury may protest.
- 12.4 If a member of the Jury witnesses an incident and decides that no breach occurred (no rules were broken), they may indicate their observation by making a long sound (whistle) and displaying a green flag.
- 12.5 Appendix P (Special Procedures for Rule 42) will apply. Rule P2.3 will not apply and rule P2.2 is changed so that it will apply to any penalty after the first one. The penalty under rule P2.1 is changed to be a one-turn penalty. This changes RRS Appendix P.
- 12.6 Arbitration following the principles of Appendix T will be used.
- 12.7 Decisions of the International Jury will be final as provided in rule 70.5.

## **13. SCORING**

- 13.1 The Low Point System will apply.
- 13.2 Five (5) races are required to be completed to constitute the Championship.
  - 13.3 (a) When fewer than six races have been completed, a boat's series score will be the total of her race scores.
  - (b) When from six to twelve races have been completed, a boat's series score will be the total of her race scores excluding her worst score.

#### **14. SUPPORT BOATS**

14.1 Coach and support boats shall register with the OA during Check-in at the registration office and shall pay an entry fee. Only support boats that have registered with the OA and carry identification provided by the OA will be allowed in the racing area.

14.2 The IM24CA coach and support boat appendix shall apply and is attached to this NOR.

14.3 Each person on board a coach or support boat shall be deemed a *support person as per RRS Definitions*

#### **15. LAUNCHING AND BERTHING**

13.1. Cranage will be available at the following times:

<b>Day</b>	<b>Date</b>	<b>Time</b>
Friday	28 <sup>th</sup> July	10.00 - 18.00
Saturday	29 <sup>th</sup> July	10.00 - 18.00
Sunday	30 <sup>th</sup> July	09.00 - 12.00

\*Cranage outside these hours will be subject to additional charge.

15.2 All boats are to be afloat by 30<sup>th</sup> July 2017 12:00

15.3 Except when sailing, boats shall be kept in their assigned docks in the harbour. Fenders and mooring lines will be required. Boats will not be permitted to attach a fender or float to the mooring/ anchor line while boats are sailing. Use of such an unattended float would create a hazard to navigation.

15.4 Bow numbers may establish the priority or order of berthing assignments, haul out order, and other items at the discretion of the OA.

#### **16. HAUL-OUT RESTRICTIONS**

16.1 Boats shall not be hauled out during the regatta except with and according to the terms of prior written permission of the Race Committee.

#### **17. DIVING EQUIPMENT AND PLASTIC POOLS**

17.1 Underwater breathing apparatus (excluding snorkels) and plastic pools or their equivalent shall not be used around boats between the preparatory signal of the first race and the end of the regatta.

#### **18. RADIO COMMUNICATION**

18.1 Except in an emergency, a boat shall neither make radio transmissions while racing nor receive radio communications not available to all boats. This restriction also applies to mobile telephones.

18.2 Race information will be given on VHF Channel xx.

## **19. PRIZES**

19.1 The prizes will be given as follows:

### **INTERNATIONAL MELGES 24 CLASS ASSOCIATION CHAMPIONSHIP PRIZE SCHEDULE**

<b>Single Fleet</b>	<b>Open Division</b>	<b>Corinthian Division</b>
<b>Daily Prizes</b>	Winner of each individual race	Winner of each individual race
<b>Overall Prizes</b>	Prizes for winning helmsman and each crew member for the top three boats	Prizes for winning helmsman and each crew member for the top five boats

19.2 Additional Prizes may be given at the discretion of the OA.

19.3 The overall World Champion will be the winner of the open division and will be awarded the “Melges Performance Sailboats Trophy.”

19.4. The winner of the Corinthian Division will be awarded the “Challenge Henri Samuel Trophy.”

## **20. DISCLAIMER OF LIABILITY**

20.1 Competitors participate in the regatta entirely at their own risk. See rule 4 Decision to Race. The organising authority will not accept any liability for material damage or personal injury or death sustained in conjunction with or prior to, during, or after the regatta. Liability waivers shall be signed by all competitors during registration.

20.2 Liability Waiver Form - As a condition of entry, each owner, skipper and individual participating crew member shall sign a liability waiver/media release. The fully executed Liability Waiver Form shall be submitted at registration prior to racing. The Liability Waiver Form will be posted on the regatta website and will be available at registration. By participating in this event, each competitor agrees to release the race organizers from any and all liability associated with such competitor’s participation in this event to the fullest extent permitted by law.

## **21. INSURANCE**

20.2 Each participating boat shall be insured with valid third-party liability insurance with a minimum cover of 1.500.000 € per event or the equivalent.

## **22. TELEVISION & PHOTOGRAPHERS' RIGHTS**

22.1 Competitors give absolute right and permission for video footage or photographs of themselves or their boat to be published in any media for press, editorial or advertising purposes.

## **23. CHANGES TO THE NOTICE OF RACE**

23.1 The Organizing Authority may change the Notice of Race; see rule 89.2(a). Any such changes will be posted on the Regatta web site [www.melges24.fi](http://www.melges24.fi)

## **24. FURTHER INFORMATION**

24.1 For further information about the Melges 24 World Championship 2017 please contact:

IM24CA administrator: Piret Salmistu

Regatta coordinator: Benedek Fluck

Finnish Melges 24 Fleet: Tomi Hakola / Nina Gefwert

24.2 Social calendar together with tourist information, accommodation availabilities and other details will be posted on the Regatta website [www.melges24.fi](http://www.melges24.fi) when available.

NOTICE OF RACE APPENDIX 1 – Key Contacts

NOTICE OF RACE APPENDIX 2 – Regatta Harbour & host organisation

NOTICE OF RACE APPENDIX 3 – Racing Areas

NOTICE OF RACE APPENDIX 4 - Coach, support, press & spectator boats

## APPENDIX 1

### KEY CONTACTS

#### IM24CA Administrator & Media Coordinator

Piret Salmistu EST

Email: [piret@melges24.com](mailto:piret@melges24.com)

Tel: +372 507 7217

#### IM24CA Regatta coordinator

Benedek Fluck HUN

[benedek.fluck@gmail.com](mailto:benedek.fluck@gmail.com)

### PRO

#### REGATTA COORDINATOR FINLAND

Nina Gefwert & Tomi Hakola

[ninag@netapp.com](mailto:ninag@netapp.com) / [tomi.hakola@icloud.com](mailto:tomi.hakola@icloud.com)

#### INTERNATIONAL JURY CHAIRMAN

Eric Mehlbaum, IJ NED

Email: [eric.mehlbaum@gmail.com](mailto:eric.mehlbaum@gmail.com)

#### M24 INTERNATIONAL MEASURER

Antonio Cardona Espin ESP

## APPENDIX 2

### VENUE AND REGATTA HARBOUR

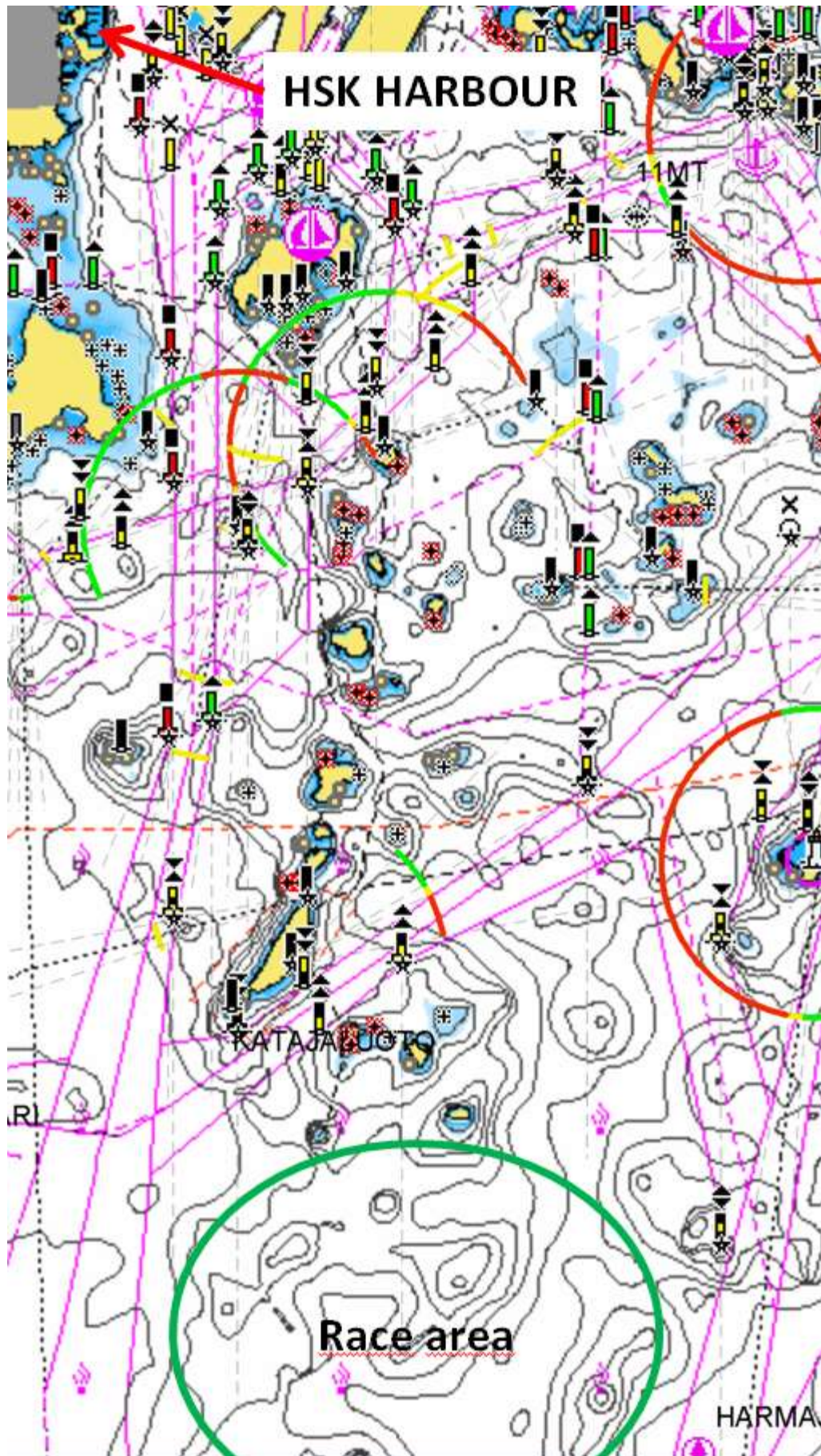
Helsingfors Segelklubb ry  
Vattuniemen puistotie 1  
FIN-00210 Helsinki



Boat preparation and trailer park = point 1  
Cranage = point 9  
Competing boat pontoons = points G & H  
Regatta office = point 4  
Jury & media office = point 3  
Tent restaurant = point 1  
Blue Peter restaurant = point 5







## **Appendix 4**

### **COACH, SUPPORT, PRESS & SPECTATOR BOATS**

#### **COACH AND SUPPORT BOATS**

1. Coach and support boats shall register with the race office during registration. They shall declare which boat or boats they are attached to.
2. Coach and support boats shall display a flag, or other identification symbol, as may be required by the race committee.
3. No coach boat or support boat shall pass information in any way to a boat that is racing. Rule 41. Infringements of this will be taken very seriously.
4. Coach and support boats shall communicate only with the boats they are registered to, and only by means of voice between races. Closed VHF or mobile telephone communication is prohibited.
5. All Melges 24 boats shall proceed to and from the racing area under their own power.
6. There shall be no transfer of any goods or equipment until after the finish of the last race of the day between Melges 24's and their coach or support boats.
7. Coach and support boats shall not go alongside their Melges 24's until after the finish of the last race of the day.
8. Coach and support boats shall keep clear of the racing area at all times during racing.
9. Any coach or support boat that interferes with another competitor or the racing in any way, including creating excess wash, or hinders an official boat carrying out its duties shall have the competitor(s) to which they are attached, liable to a penalty at the discretion of the jury.
10. Any competitor may protest under this attachment.
11. The penalty given by the jury is at their discretion, but shall be applied to the overall score and therefore not discarded.

#### **PRESS AND SPECTATOR BOATS**

1. All Press and official spectator boats shall be registered by the race organising authority during registration.
2. Press and spectator boats shall display any flag, or other identification symbol as may be required by the race committee.
3. The race organisers may appoint one or more photo boats, which will be allowed within the race course. The position of these boats shall not be grounds for redress.
4. Press and spectator boats shall not interfere with the racing in anyway and shall stay at a distance outside the racecourse where their wake causes no problem.